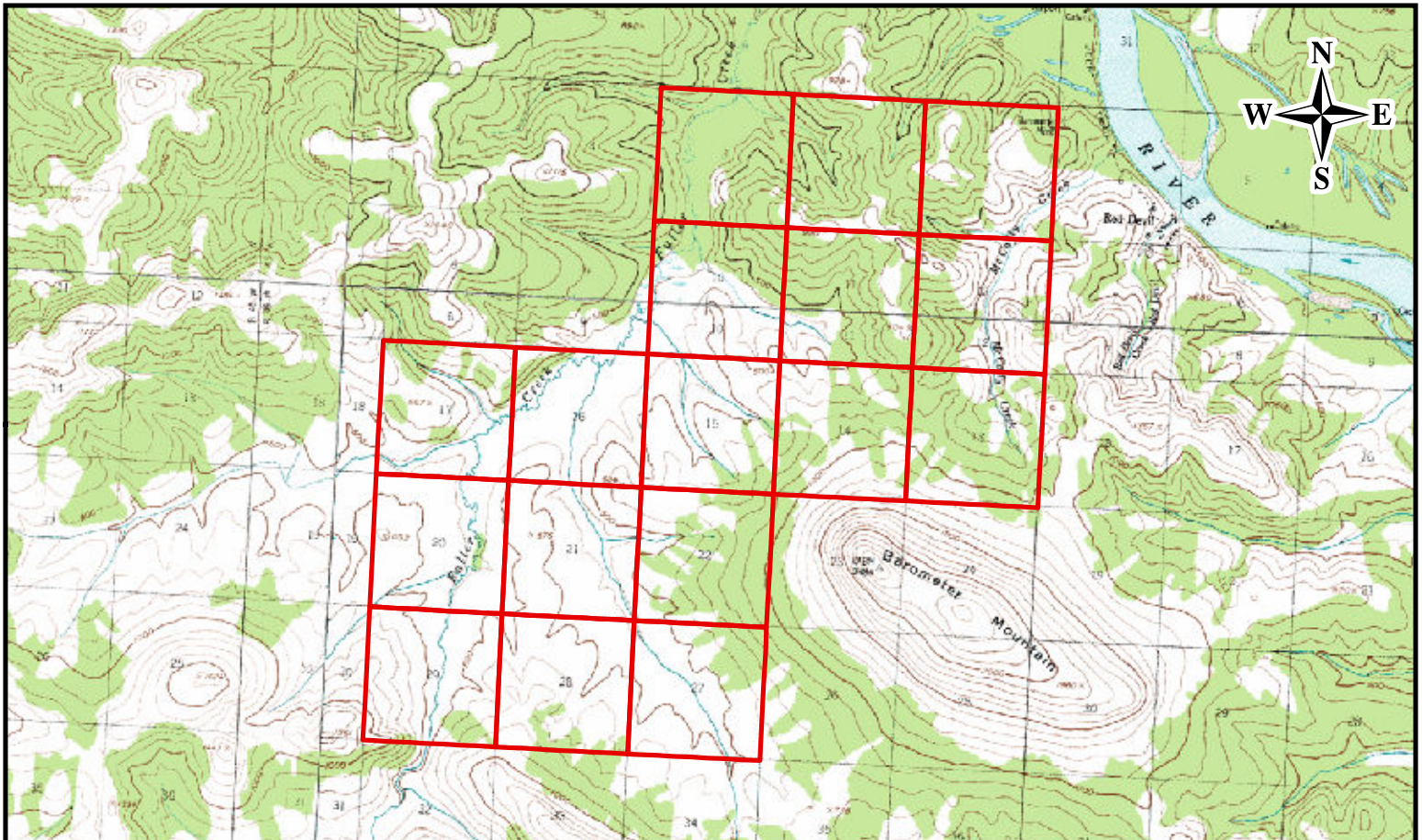


DATE: 09-05-14
 FILE: FIG 1 Level III Ecoregion
 and HUC8 Map 09-05-14
 PROJECT NO: 12372
 AERIAL: 2013 TC 1 FT ESRI

FIGURE 1
 KUSKOKWIM RIVER MITIGATION BANK
 LOCATION MAP for BANK SITES
 LEVEL III ECOREGIONS, & 8-DIGIT HUCs

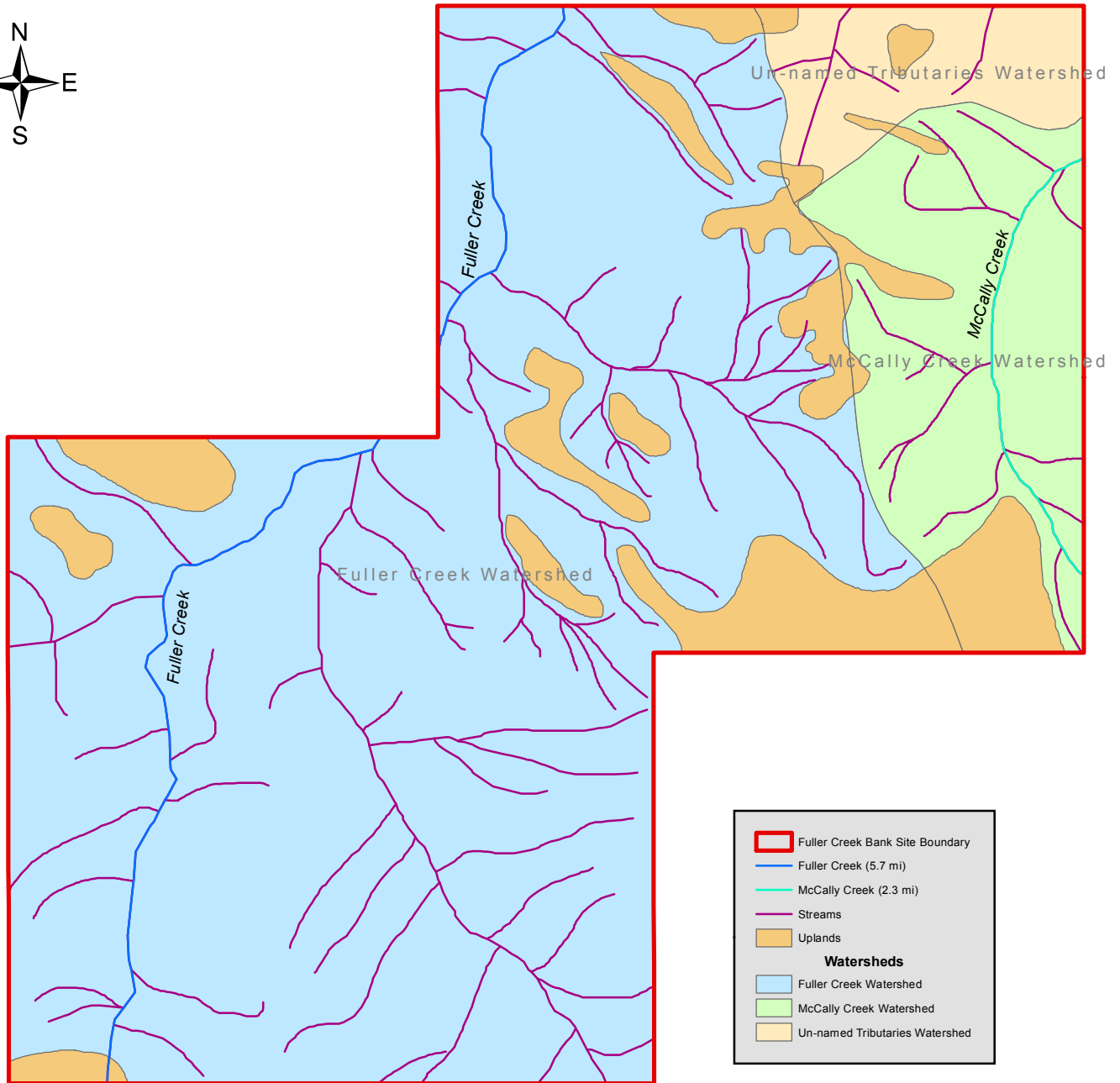


Source: Esri, DigitalGlobe, GeoEye, I-cubed, Earthstar Geographics, CNES/Airbus DS, USDA, USGS, AEX, Getmapping, Aerogrid, IGN, IGP, swisstopo, and the GIS User Community

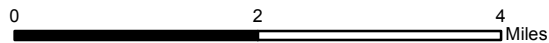
DATE: 09-05-14
 FILE: FIG 2 Fuller Creek Bank Site
 PROJECT NO: 12372
 AERIAL: USGS Quad
 2013 TC 1 FT ESRI
 SCALE : 1" = 7,000'

FIGURE 2
 KUSKOKWIM RIVER MITIGATION BANK
 FULLER CREEK BANK SITE
 QUADRANGLE MAP & SATELLITE IMAGERY

 **EarthBalance**[®]
 2579 North Toledo Blade Blvd.
 North Port, FL 34289
 Tel (941) 426-7878
 Fax (941) 426-8778
 www.earthbalance.com



Fuller Creek Bank Site					
Watershed	Stream Miles	Creek Miles	Wetland Acres	Upland Acres	Total Acres
Fuller Creek	48.3	5.7	7,812.2	922.2	8,734.4
McCally Creek	8.2	2.3	1,339.4	249.8	1,589.2
Un-named	1.9	0.0	501.4	55.2	556.6
Total	58.4	8.0	9,653.0	1,227.2	10,880.2

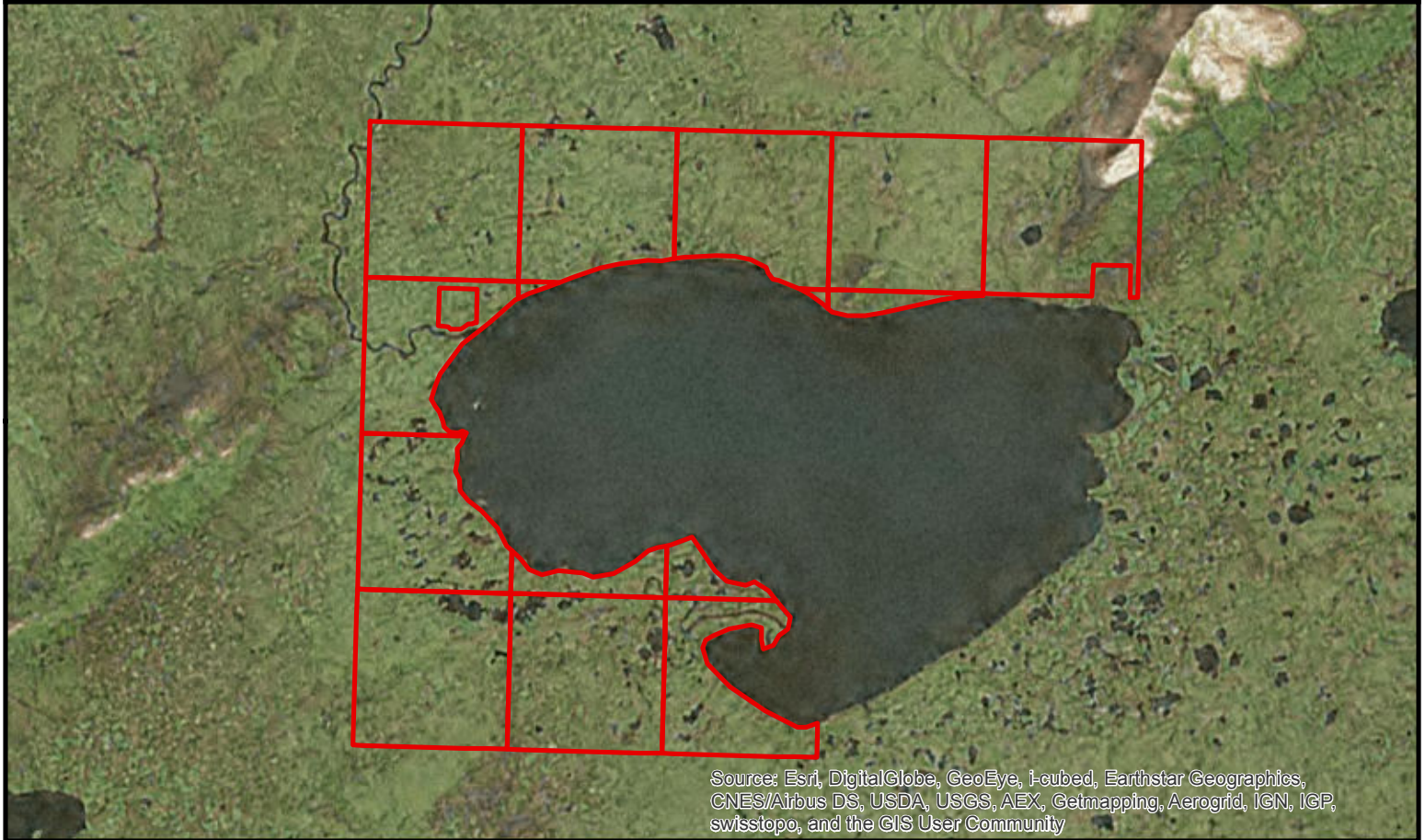
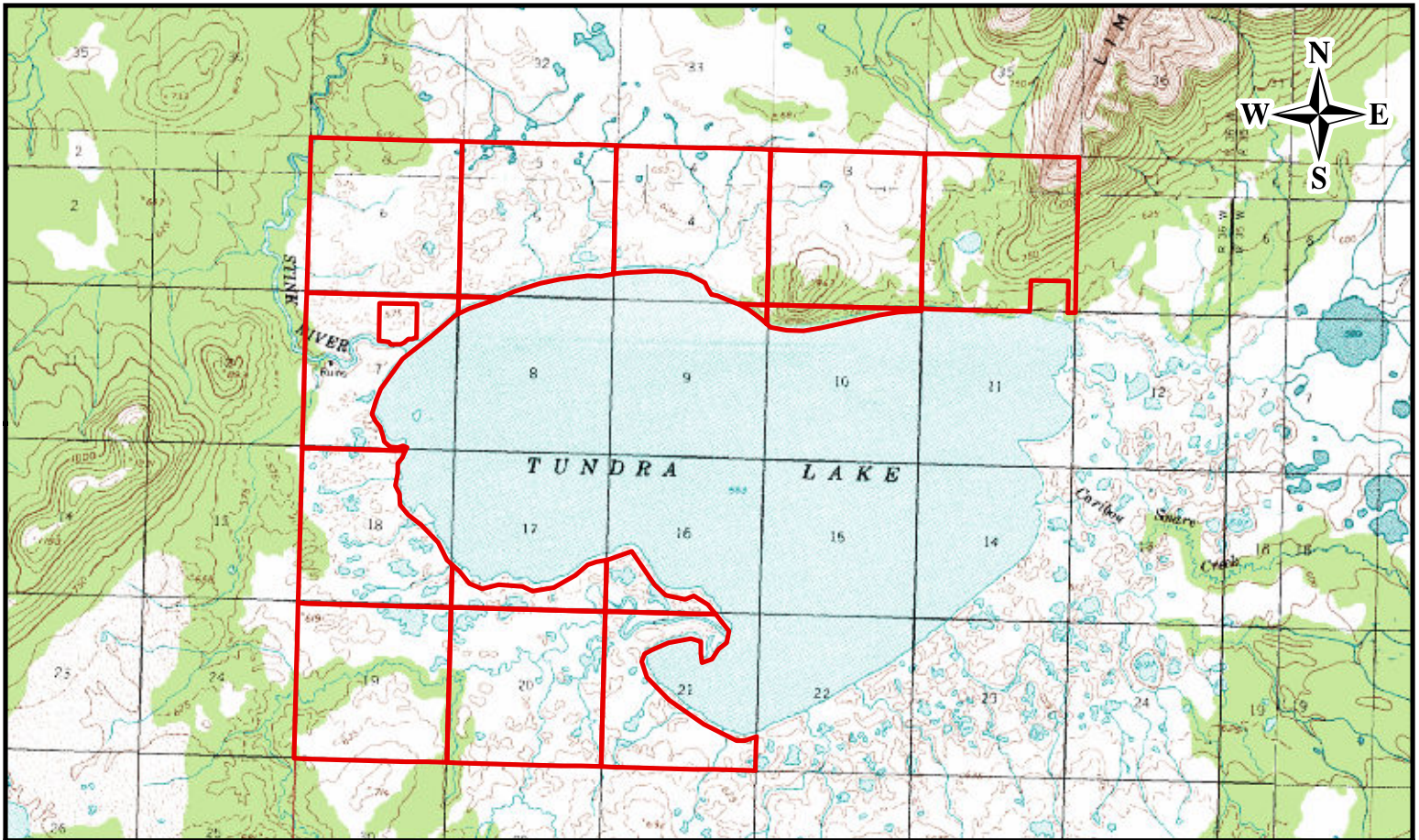


Projection: NAD 83 Alaska Albers Equal Area Conic

DATE: 09-05-14
 FILE: FIG 3 Fuller Creek Bank Site
 PROJECT NO: 12372
 AERIAL: N/A

FIGURE 3
 KUSKOKWIM RIVER MITIGATION BANK
 FULLER CREEK BANK SITE
 WATERSHEDS, TRIBUTARY STREAMS & UPLANDS

 **EarthBalance**[®]
 2579 North Toledo Blade Blvd.
 North Port, FL 34289
 Tel (941) 426-7878
 Fax (941) 426-8778
 www.earthbalance.com

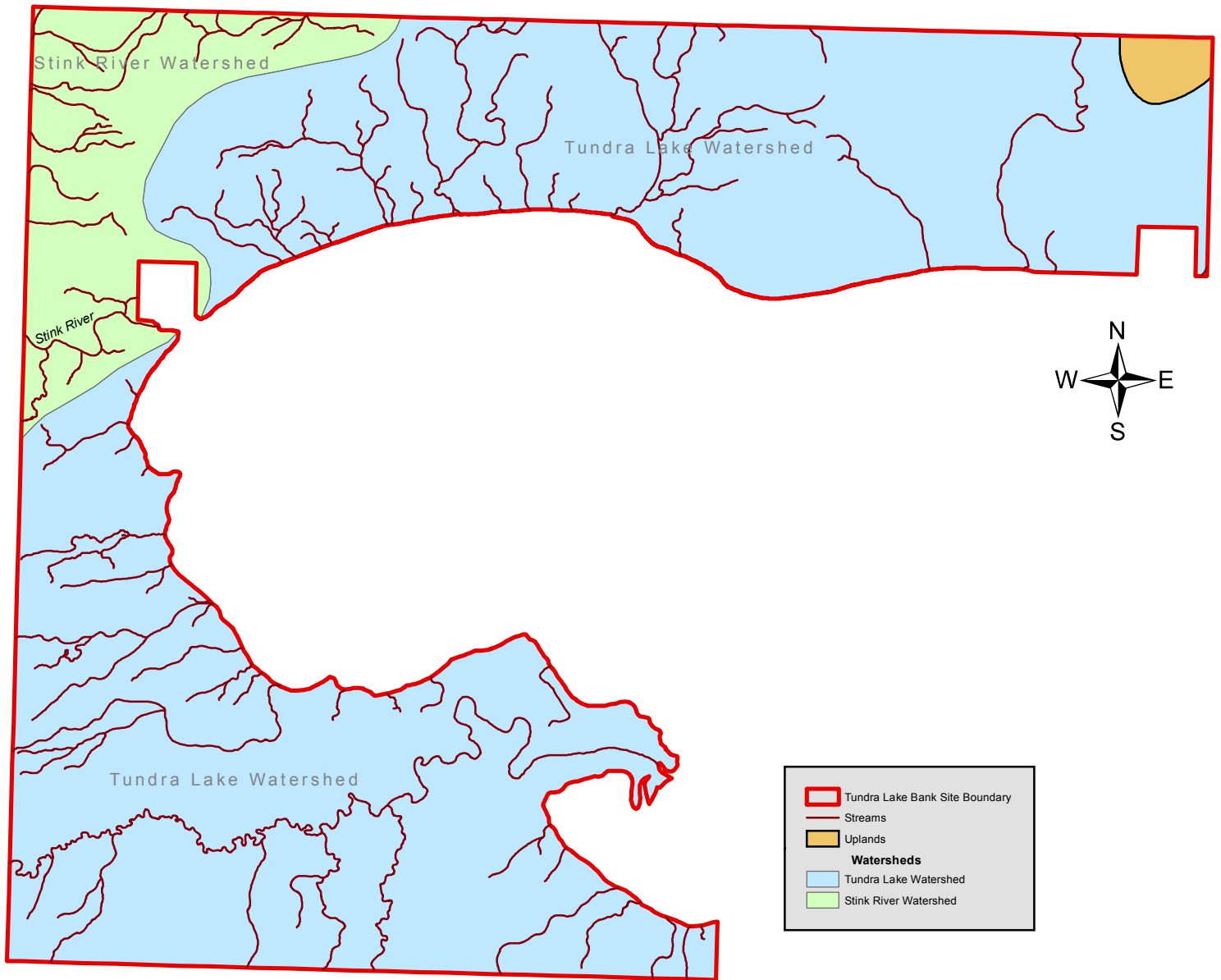


Source: Esri, DigitalGlobe, GeoEye, i-cubed, Earthstar Geographics, CNES/Airbus DS, USDA, USGS, AEX, Getmapping, Aerogrid, IGN, IGP, swisstopo, and the GIS User Community

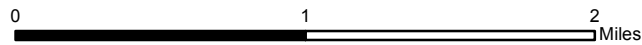
DATE: 09-05-14
 FILE: FIG 4 Tundra Lake Bank Site
 PROJECT NO: 12372
 AERIAL: USGS Quad
 2013 TC IFT ESRI
 SCALE : 1" = 6,000'

FIGURE 4
 KUSKOKWIM RIVER MITIGATION BANK
 TUNDRA LAKE BANK SITE
 QUADRANGLE MAP & SATELLITE IMAGERY

 **EarthBalance**[®]
 2579 North Toledo Blade Blvd.
 North Port, FL 34289
 Tel (941) 426-7878
 Fax (941) 426-8778
 www.earthbalance.com



Tundra Lake Bank Site				
Watershed	Stream Miles	Wetland Acres	Upland Acres	Total Acres
Tundra Lake	38.1	5,110.7	59.0	5,169.7
Stink River	7.5	729.0	0.0	729.0
Total	45.6	5,839.7	59.0	5,898.7

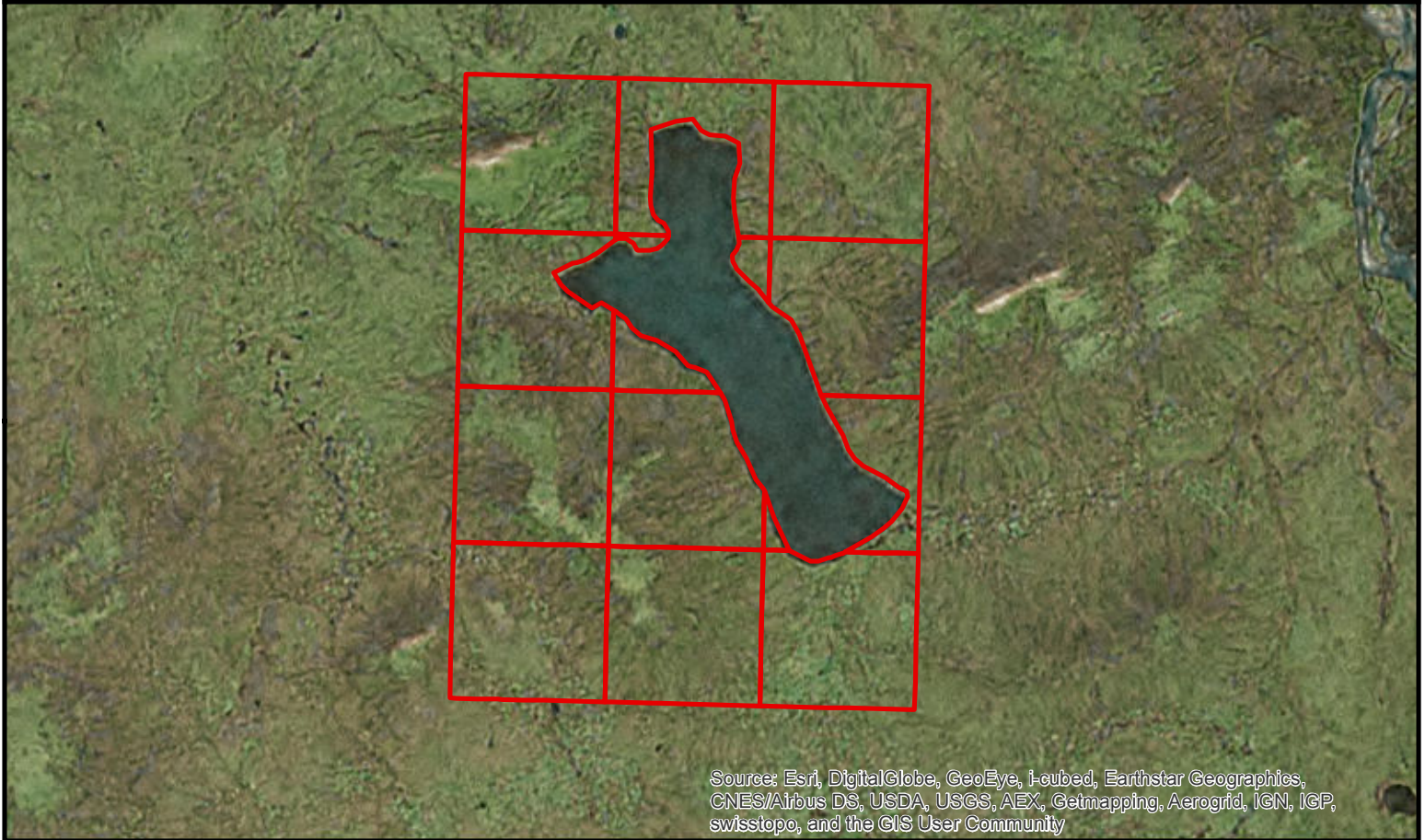
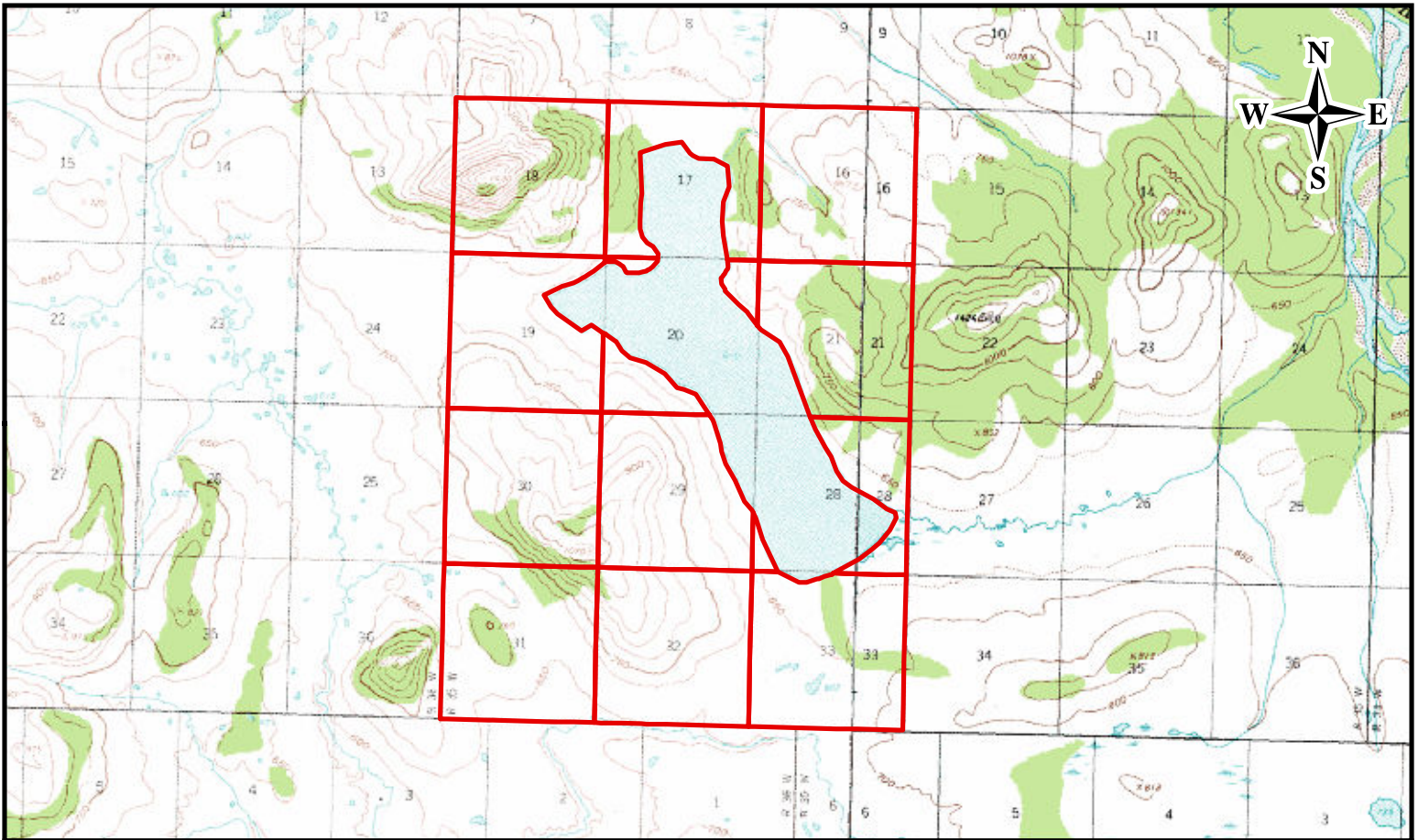


Projection: NAD 83 Alaska Albers Equal Area Conic

DATE: 09-05-14
 FILE: FIG 5 Tundra Lake Bank Site
 PROJECT NO: 12372
 AERIAL: N/A

FIGURE 5
 KUSKOKWIM RIVER MITIGATION BANK
 TUNDRA LAKE BANK SITE
 WATERSHEDS, TRIBUTARY STREAMS & UPLANDS

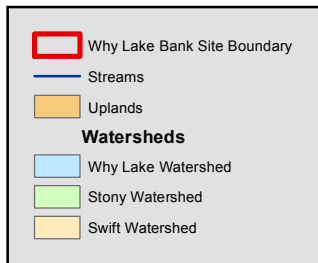
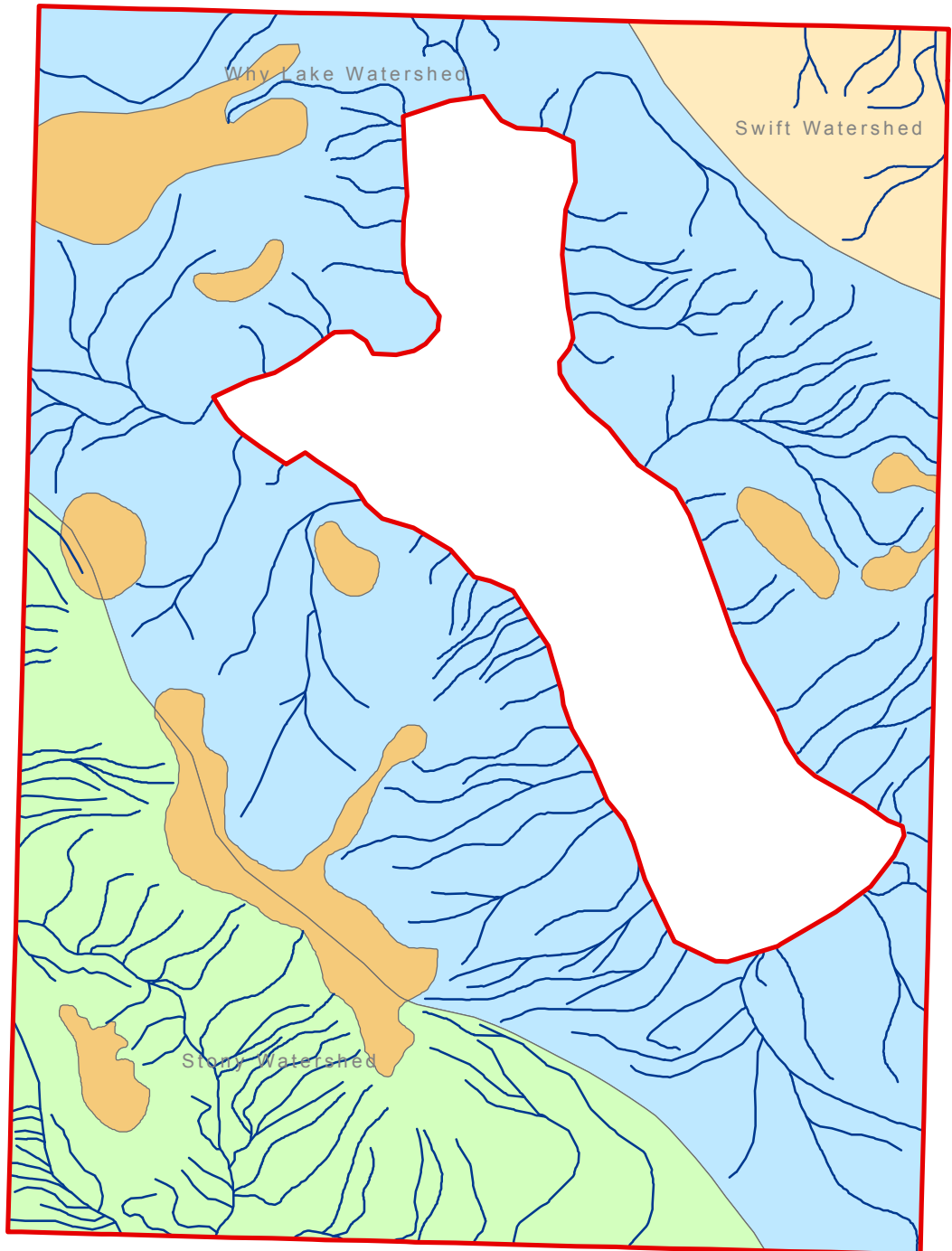
 **EarthBalance**[®]
 2579 North Toledo Blade Blvd.
 North Port, FL 34289
 Tel (941) 426-7878
 Fax (941) 426-8778
 www.earthbalance.com



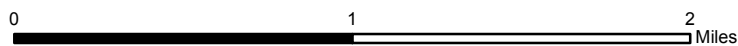
DATE: 09-05-14
 FILE: FIG 6 Why Lake Bank Site
 PROJECT NO: 12372
 AERIAL: USGS Quad
 2013 TC 1FT ESRI
 SCALE : 1" = 6,000'

FIGURE 6
 KUSKOKWIM RIVER MITIGATION BANK
 WHY LAKE BANK SITE
 QUADRANGLE MAP & SATELLITE IMAGERY

 **EarthBalance**[®]
 2579 North Toledo Blade Blvd.
 North Port, FL 34289
 Tel (941) 426-7878
 Fax (941) 426-8778
 www.earthbalance.com



Why Lake Bank Site				
Watershed	Stream Miles	Wetland Acres	Upland Acres	Total Acres
Why Lake	43.1	3,957.4	426.7	4,384.1
Stony	22.9	1,479.5	145.3	1,624.8
Swift	2.4	374.5	0.0	374.5
Total	68.4	5,811.4	572.0	6,383.4

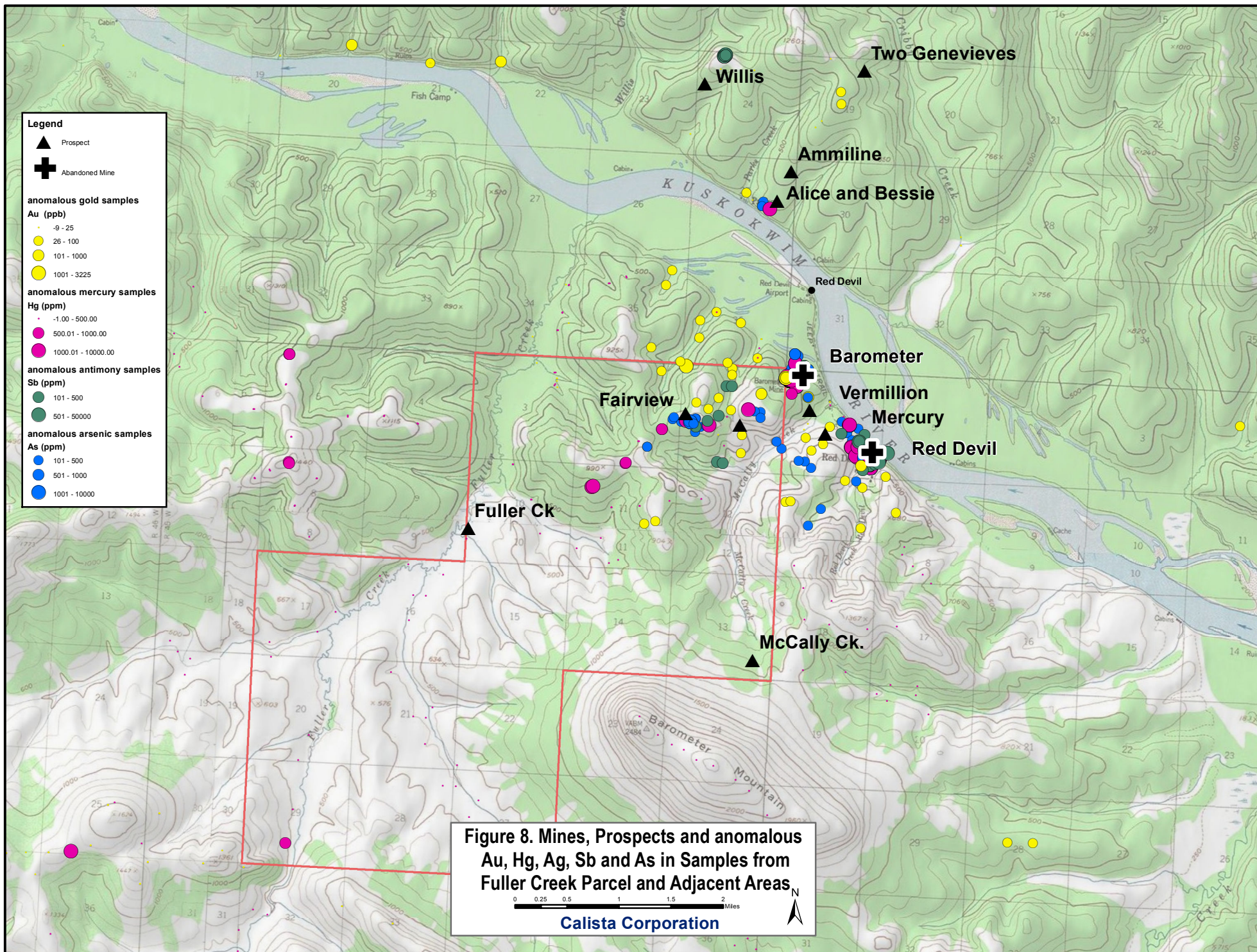


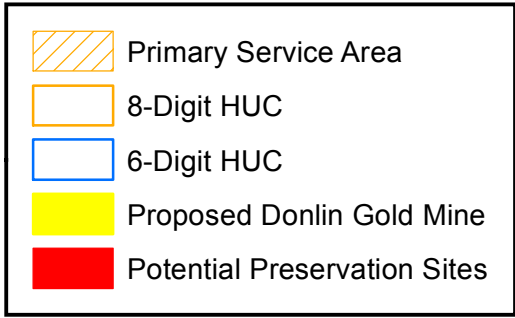
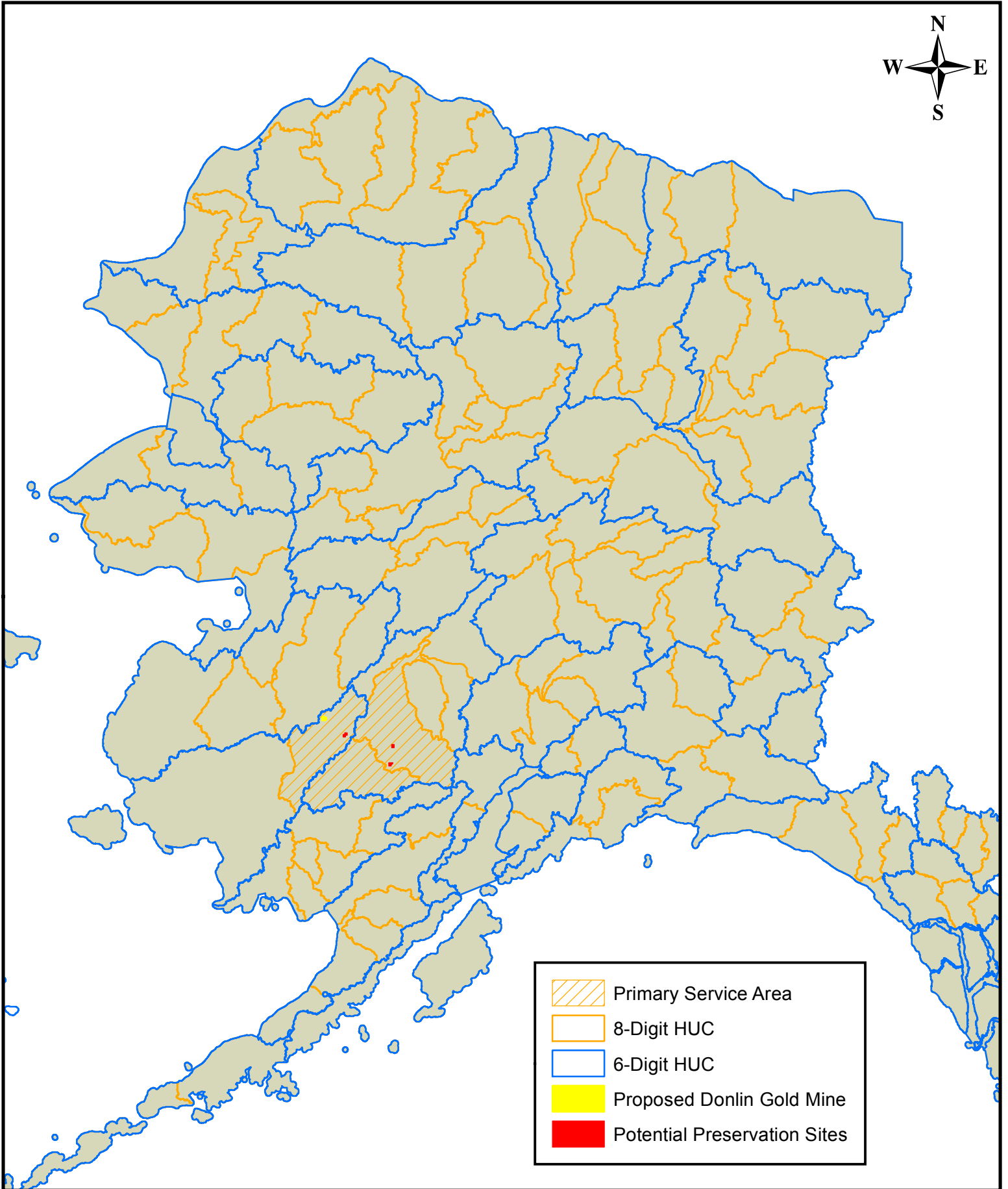
Projection: NAD 83 Alaska Albers Equal Area Conic

DATE: 09-05-14
 FILE: FIG 7 Why Lake Bank Site
 PROJECT NO: 12372
 AERIAL: N/A
 SCALE : 1" = 3,000'

FIGURE 7
 KUSKOKWIM RIVER MITIGATION BANK
 WHY LAKE BANK SITE
 WATERSHEDS, TRIBUTARY STREAMS & UPLANDS

 **EarthBalance**[®]
 2579 North Toledo Blade Blvd.
 North Port, FL 34289
 Tel (941) 426-7878
 Fax (941) 426-8778
 www.earthbalance.com

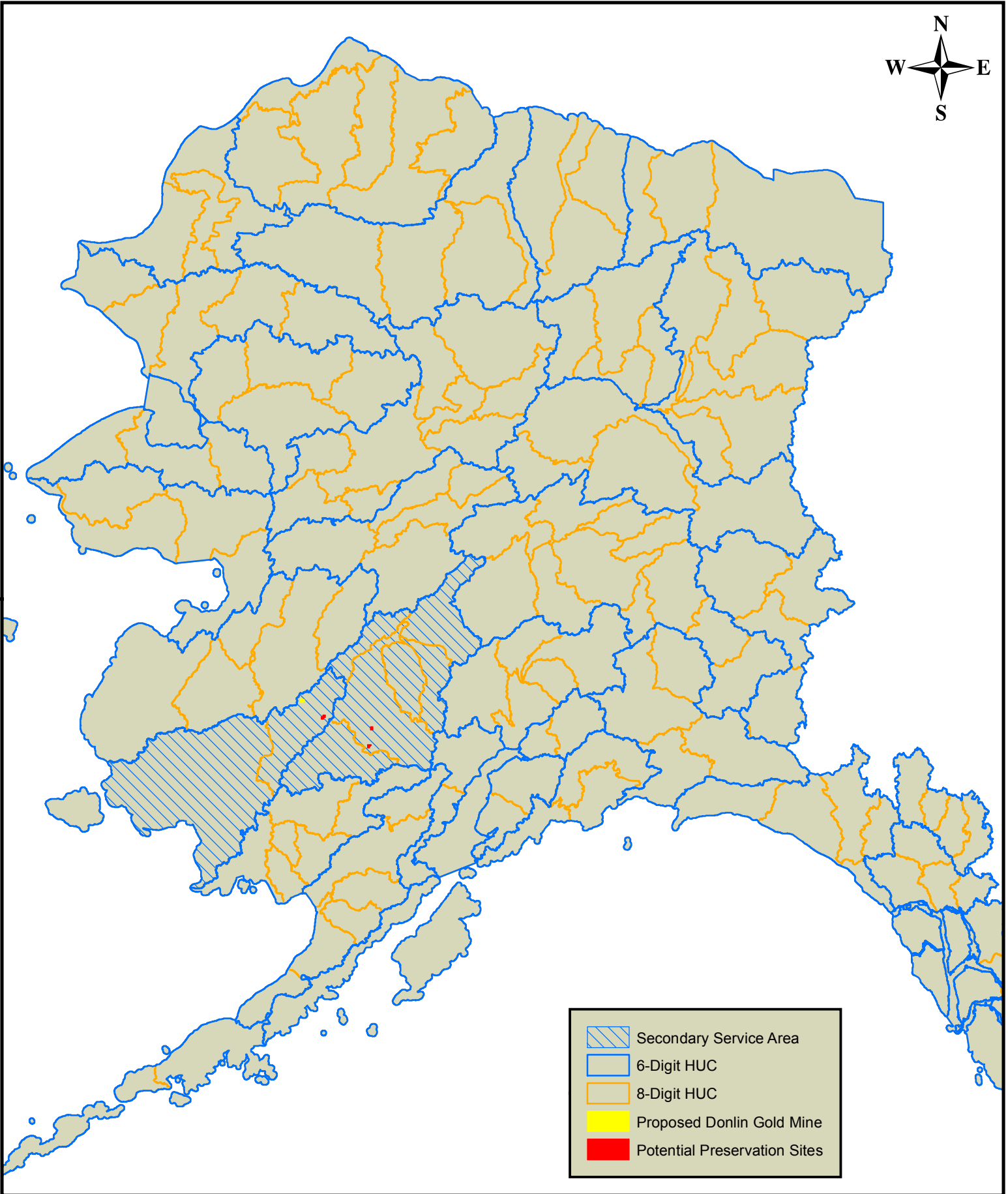




DATE: 09-05-14
FILE: FIG 9 Primary Service Area
PROJECT NO: 12372
AERIAL: N/A
SCALE : N/A

FIGURE 9
KUSKOKWIM RIVER MITIGATION BANK
PRIMARY SERVICE AREA

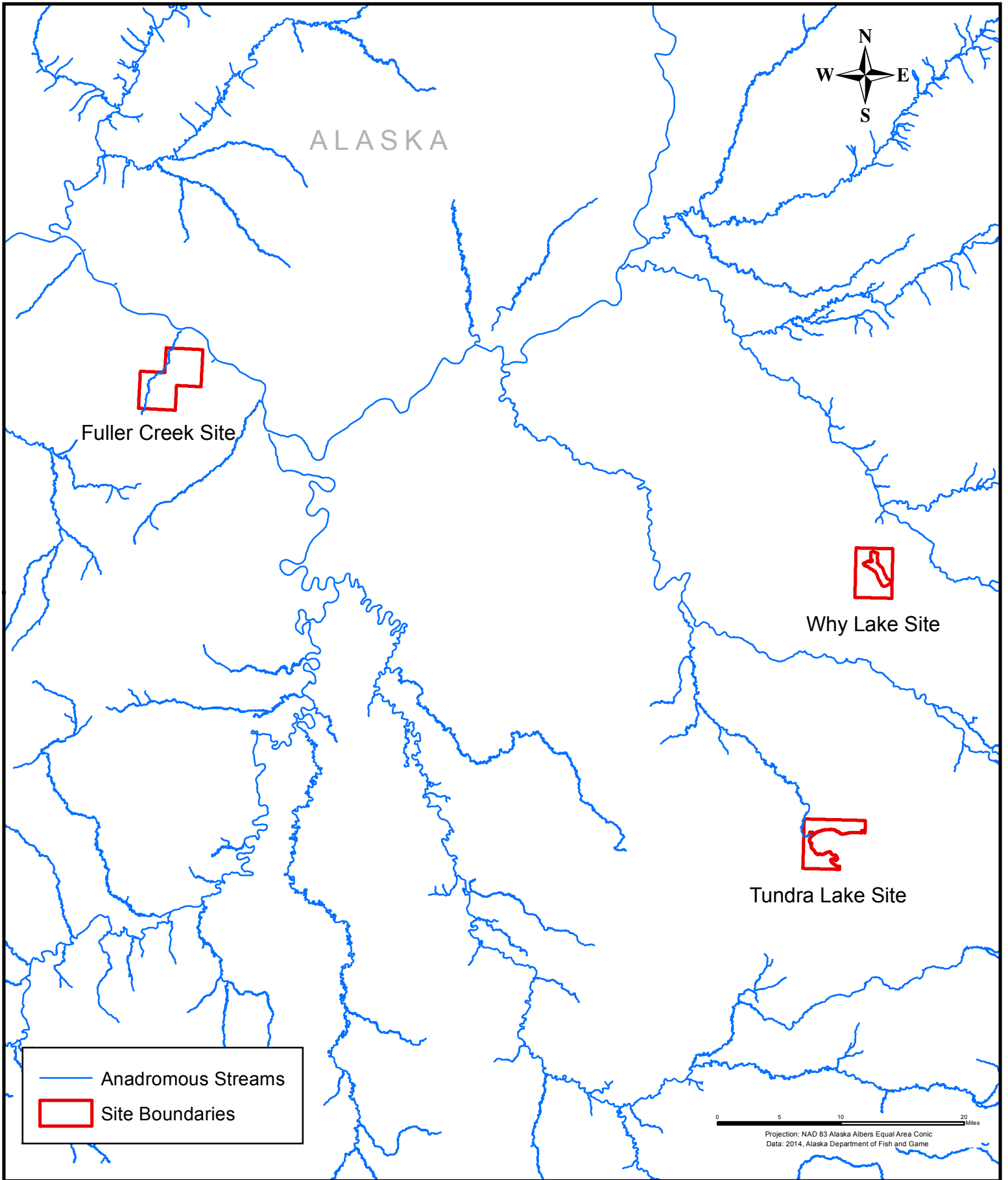
 EarthBalance®
2579 North Toledo Blade Blvd.
North Port, FL 34289
Tel (941) 426-7878
Fax (941) 426-8778
www.earthbalance.com



DATE: 09-05-14
FILE: FIG 10 Secondary Service Area
PROJECT NO: 12372
AERIAL: N/A
SCALE : N/A

FIGURE 10
KUSKOKWIM RIVER MITIGATION BANK
SECONDARY SERVICE AREA

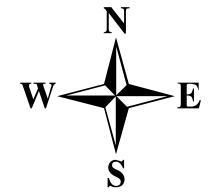
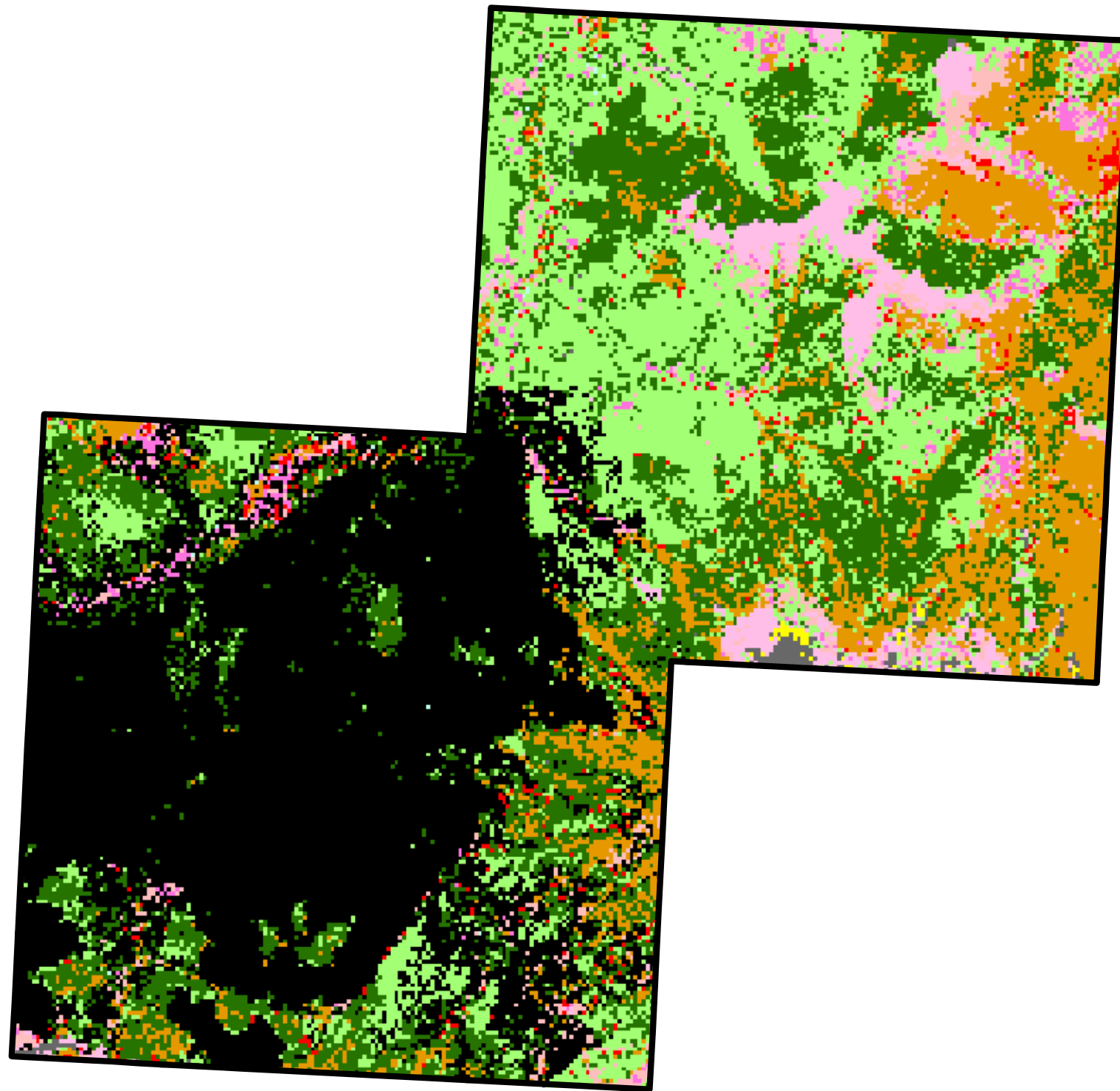
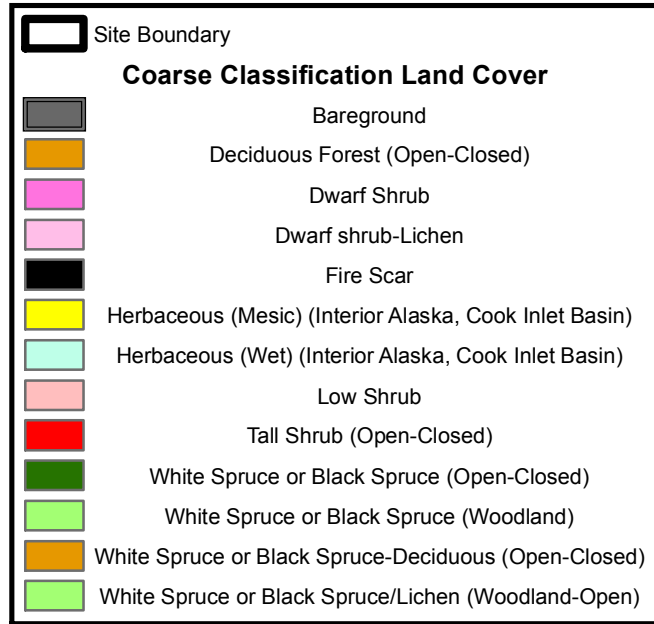
 **EarthBalance**[®]
2579 North Toledo Blade Blvd.
North Port, FL 34289
Tel (941) 426-7878
Fax (941) 426-8778
www.earthbalance.com



DATE: 09-05-14
 FILE: FIG 11 Bank Sites and
 Anadromous Streams
 PROJECT NO: 12372
 AERIAL: N/A

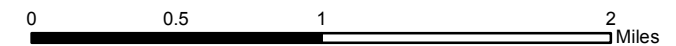
FIGURE 11
 KUSKOKWIM RIVER MITIGATION BANK
 BANK SITES and ANADROMOUS STREAMS

 EarthBalance®
 2579 North Toledo Blade Blvd.
 North Port, FL 34289
 Tel (941) 426-7878
 Fax (941) 426-8778
 www.earthbalance.com



FULLER CREEK LAND COVER		
Coarse Class	Life Form	Percent
Bareground	BAREGROUND	21.9
Deciduous Forest (Open-Closed)	FOREST	8.7
Deciduous Forest (Open-Closed)	FOREST	7.9
Dwarf Shrub	DWARF SHRUB	4.9
Dwarf shrub-Lichen	DWARF SHRUB	0.3
Fire Scar	OTHER	6.1
Fire Scar	OTHER	4.4
Herbaceous (Mesic) (Interior Alaska, Cook Inlet Basin)	HERBACEOUS	1.1
Herbaceous (Wet) (Interior Alaska, Cook Inlet Basin)	HERBACEOUS	1.4
Low Shrub	LOW SHRUB	3.4
Low Shrub	LOW SHRUB	1.6
Tall Shrub (Open-Closed)	TALL SHRUB	2.9
White Spruce or Black Spruce (Open-Closed)	FOREST	0.0
White Spruce or Black Spruce (Open-Closed)	FOREST	0.1
White Spruce or Black Spruce (Woodland)	FOREST	0.1
White Spruce or Black Spruce (Woodland)	FOREST	0.5
White Spruce or Black Spruce/Lichen (Woodland-Open)	FOREST	26.2
White Spruce or Black Spruce/Lichen (Woodland-Open)	FOREST	8.4
White Spruce or Black Spruce-Deciduous (Open-Closed)	FOREST	0.0
White Spruce or Black Spruce-Deciduous (Open-Closed)	FOREST	0.0

Cite: Boggs, K., T.V. Boucher, T.T. Kuo, D. Fehring, and S. Guyer. 2013. Vegetation map and classification: Northern, Western and Interior Alaska. Alaska Natural Heritage Program, University of Alaska Anchorage, Anchorage, Alaska.

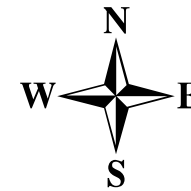
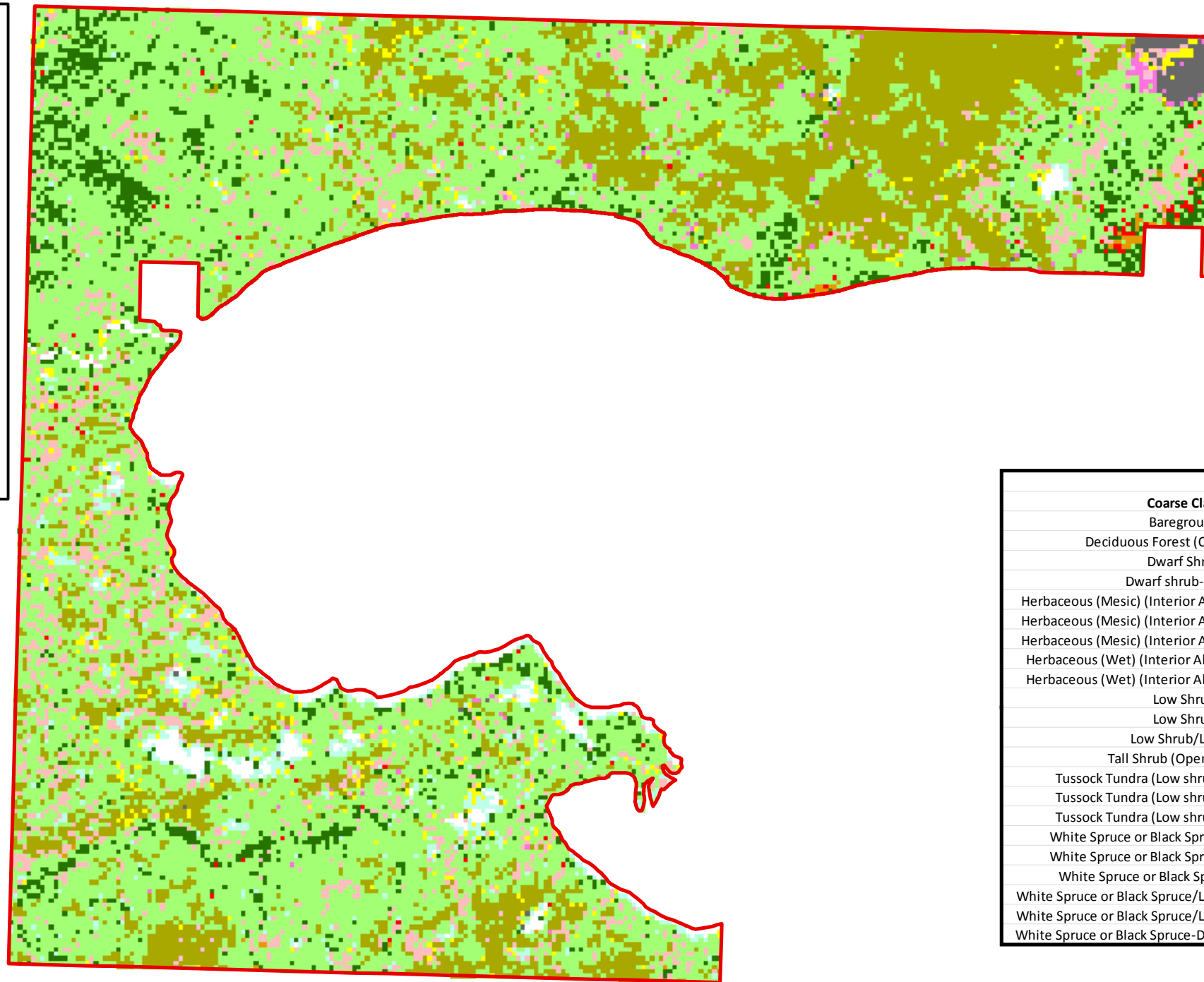
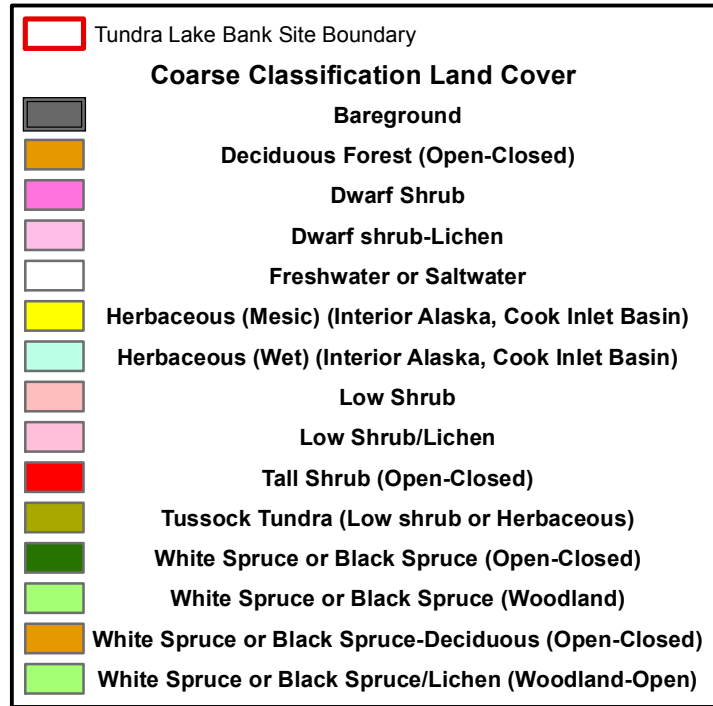


Projection: NAD 83 Alaska Albers Equal Area Conic

DATE: 09-05-14
 FILE: FIG 12 Fuller Creek Bank Site
 PROJECT NO: 12372
 AERIAL: N/A
 SCALE : 1"=3,500'

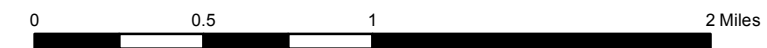
FIGURE 12
KUSKOKWIM RIVER MITIGATION BANK
FULLER CREEK BANK SITE
ALASKA NATURAL HERITAGE PROGRAM LAND COVER


 2579 North Toledo Blade Blvd.
 North Port, FL 34289
 Tel (941) 426-7878
 Fax (941) 426-8778
 www.earthbalance.com



Tundra Lake Land Cover		
Coarse Class	Life Form	Percent
Bareground	BAREGROUND	0.7
Deciduous Forest (Open-Closed)	FOREST	0.1
Dwarf Shrub	DWARF SHRUB	0.4
Dwarf shrub-Lichen	DWARF SHRUB	0.0
Herbaceous (Mesic) (Interior Alaska, Cook Inlet Basin)	HERBACEOUS	0.3
Herbaceous (Mesic) (Interior Alaska, Cook Inlet Basin)	HERBACEOUS	0.6
Herbaceous (Mesic) (Interior Alaska, Cook Inlet Basin)	HERBACEOUS	1.0
Herbaceous (Wet) (Interior Alaska, Cook Inlet Basin)	HERBACEOUS	2.2
Herbaceous (Wet) (Interior Alaska, Cook Inlet Basin)	HERBACEOUS	0.4
Low Shrub	LOW SHRUB	8.0
Low Shrub	LOW SHRUB	0.1
Low Shrub/Lichen	LOW SHRUB	0.1
Tall Shrub (Open-Closed)	TALL SHRUB	0.4
Tussock Tundra (Low shrub or Herbaceous)	LOW SHRUB	6.6
Tussock Tundra (Low shrub or Herbaceous)	HERBACEOUS	10.9
Tussock Tundra (Low shrub or Herbaceous)	HERBACEOUS	4.2
White Spruce or Black Spruce (Open-Closed)	FOREST	0.0
White Spruce or Black Spruce (Open-Closed)	FOREST	6.8
White Spruce or Black Spruce (Woodland)	FOREST	42.7
White Spruce or Black Spruce/Lichen (Woodland-Open)	FOREST	4.4
White Spruce or Black Spruce/Lichen (Woodland-Open)	FOREST	9.9
White Spruce or Black Spruce-Deciduous (Open-Closed)	FOREST	0.2

Cite: Boggs, K., T.V. Boucher, T.T. Kuo, D. Fehring, and S. Guyer. 2013. Vegetation map and classification: Northern, Western and Interior Alaska. Alaska Natural Heritage Program, University of Alaska Anchorage, Anchorage, Alaska.

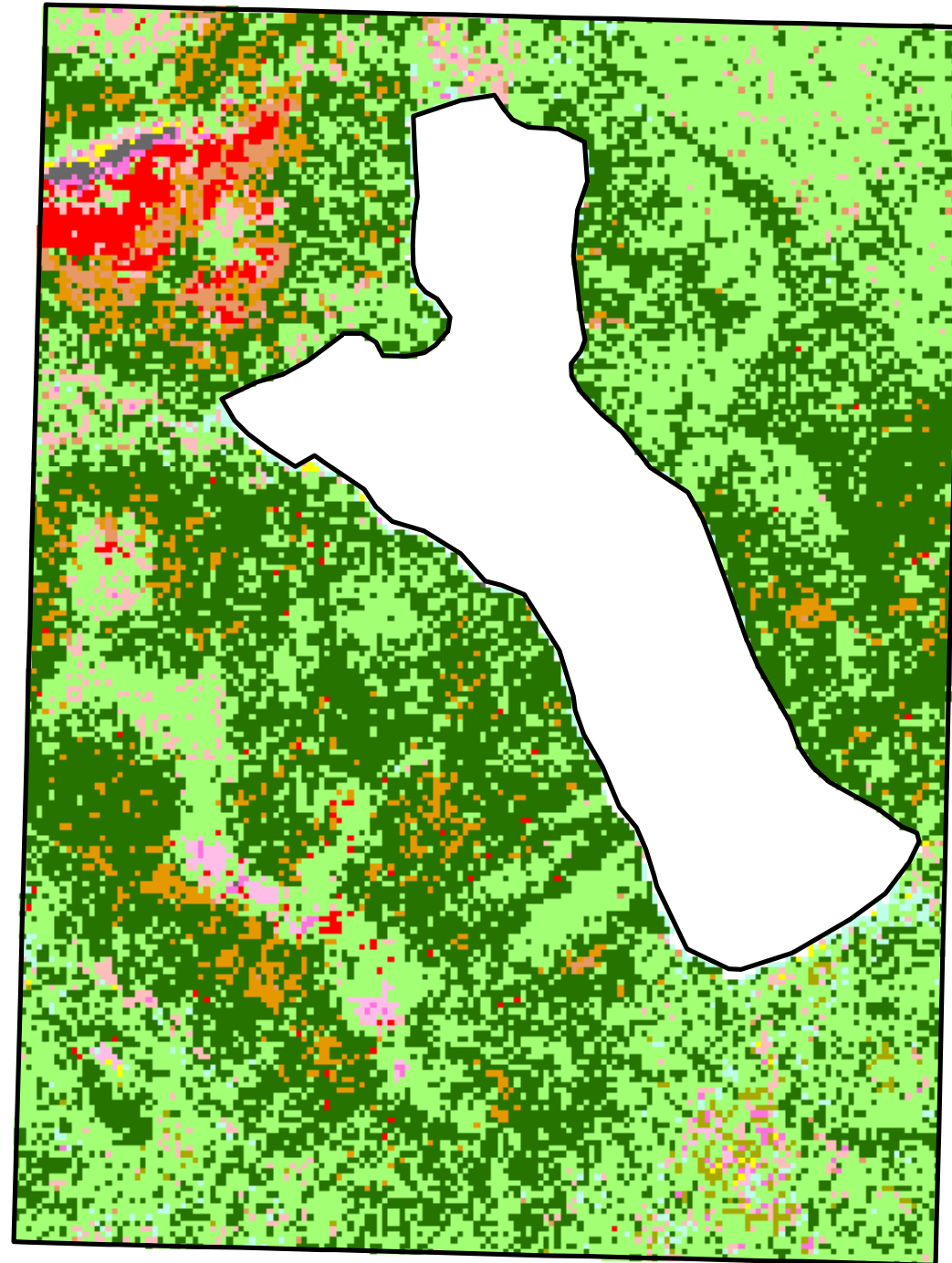
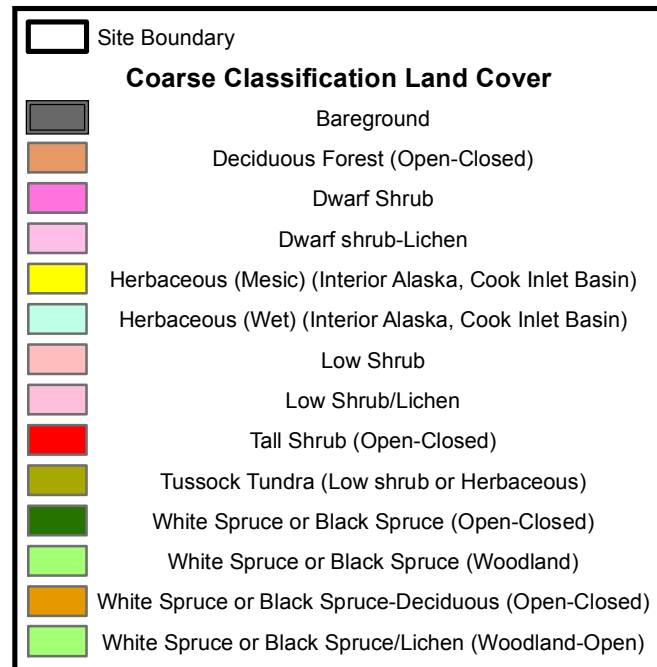


Projection: NAD 83 Alaska Albers Equal Area Conic

DATE: 09-05-14
 FILE: FIG 13 Tundra Lake Bank Site
 PROJECT NO: 12372
 AERIAL: N/A
 SCALE : 1"=3,000'

FIGURE 13
KUSKOKWIM RIVER MITIGATION BANK
TUNDRA LAKE BANK SITE
ALASKA NATURAL HERITAGE PROGRAM LAND COVER


 2579 North Toledo Blade Blvd.
 North Port, FL 34289
 Tel (941) 426-7878
 Fax (941) 426-8778
 www.earthbalance.com



WHY LAKE LAND COVER		
Coarse Class	Life Form	Percent
Bareground	BAREGROUND	0.0
Deciduous Forest (Open-Closed)	FOREST	43.2
Deciduous Forest (Open-Closed)	FOREST	3.2
Dwarf Shrub	DWARF SHRUB	39.4
Dwarf shrub-Lichen	DWARF SHRUB	0.2
Herbaceous (Mesic) (Interior Alaska, Cook Inlet Basin)	HERBACEOUS	1.5
Herbaceous (Mesic) (Interior Alaska, Cook Inlet Basin)	HERBACEOUS	2.7
Herbaceous (Mesic) (Interior Alaska, Cook Inlet Basin)	HERBACEOUS	1.0
Herbaceous (Wet) (Interior Alaska, Cook Inlet Basin)	HERBACEOUS	0.4
Herbaceous (Wet) (Interior Alaska, Cook Inlet Basin)	HERBACEOUS	1.7
Low Shrub	LOW SHRUB	3.2
Low Shrub	LOW SHRUB	0.0
Low Shrub/Lichen	LOW SHRUB	0.6
Tall Shrub (Open-Closed)	TALL SHRUB	0.4
Tussock Tundra (Low shrub or Herbaceous)	LOW SHRUB	0.5
Tussock Tundra (Low shrub or Herbaceous)	HERBACEOUS	0.1
White Spruce or Black Spruce (Open-Closed)	FOREST	1.3
White Spruce or Black Spruce (Open-Closed)	FOREST	0.1
White Spruce or Black Spruce (Woodland)	FOREST	0.1
White Spruce or Black Spruce/Lichen (Woodland-Open)	FOREST	0.1
White Spruce or Black Spruce/Lichen (Woodland-Open)	FOREST	0.1
White Spruce or Black Spruce-Deciduous (Open-Closed)	FOREST	0.1
White Spruce or Black Spruce-Deciduous (Open-Closed)	FOREST	0.2

Cite: Boggs, K., T.V. Boucher, T.T. Kuo, D. Fehringier, and S. Guyer. 2013. Vegetation map and classification: Northern, Western and Interior Alaska. Alaska Natural Heritage Program, University of Alaska Anchorage, Anchorage, Alaska.



Projection: NAD 83 Alaska Albers Equal Area Conic

DATE: 09-05-14
 FILE: FIG 14 Why Lake Bank Site
 PROJECT NO: 12372
 AERIAL: N/A
 SCALE : 1"=3,000'

FIGURE 14
 KUSKOKWIM RIVER MITIGATION BANK
 WHY LAKE BANK SITE
 ALASKA NATURAL HERITAGE PROGRAM LAND COVER


 2579 North Toledo Blade Blvd.
 North Port, FL 34289
 Tel (941) 426-7878
 Fax (941) 426-8778
 www.earthbalance.com